

RETAIL

LOGISTICS

INDUSTRY

Product Catalog

PORTABLE DEVICES USA



Inside logistics, retail and industry ACD offers robust systems and solutions that, thanks to reliable and flawless work, make the daily working routine easier. Our products impress thanks to the simple and intuitive entry as well as increased durability, even in the most adverse of conditions.



TABLE OF CONTENTS

01 / Mobile Handheld Computers	04
02 / Backhand Scanner	08
03 / Vehicle Mount Terminals	12
04 / Softwaretools	18
04.1 Softwaretools Mobile Handheld Computers	19
04.2 Softwaretools Backhand Scanner	21
04.3 Softwaretools Vehicle Mount Terminals	22
05 / Mobile Workstation	24
06 / Pick by Voice	37

01 / MOBILE HANDHELD COMPUTERS



Robust all-rounders for fast and efficient work

Mobile Handheld Computers for logistics, retail and industry applications are developed for the daily work routine in tough environments. Freely configurable function keys, an integrated barcode scanner, impact-proof housing, the proven quick-entry keyboard and a premium TFT color-display with LED backlight are all integral components of these products. Optional accessories that are also available include grips, keyboard variants, WLAN, UMTS, RFID, BT-compatible close-range network as well as a camera.



01 / Mobile Handheld Computers

M260TE

TECHNICAL DATA

Housing:	ABS	Touchscreen:	Resistive, minimum surface hardness 3H
Protection:	IP54	Keyboard:	Quick-entry keyboard, 15 mm space between keys, 15 keys in hard case design, 10 function keys
Operating temperature:	0 °C to 40 °C/32 °F to 104 °F	Barcode scanner:	1D scanner SE965 integrated in housing (side scanner keys)
Storage temperature:	-20 °C to 70 °C/-4 °F to 158 °F	Processor:	NXP® i.MX6 DualLite, 1 GHz (DualCore, Cortex A9)
Dimensions:	219 x 62/83 x 39/41 mm/8.62 x 2.44/3.27 x 1.54/1.61 inch (L x W x H)	Memory:	8 GB Flash, 1 GB RAM, larger memory optionally available
Weight:	Approx. 500 g/17.64 oz	Operating system:	Android™** Industrial+
Power supply:	Quick-change battery, li-ion with 24.5 Wh (3,400 mAh/7.2 V), docking station or battery charger	Interfaces:	USB OTG
Display:	3.5" color TFT Display with LED backlight, 240 x 320 pixels, 640 cd/m², Status LED		

TECHNICAL DATA



Options:

- 2D scanner SE4500
- 1D long-range scanner SE1524 with grip
- 2D long-range scanner EX25 with grip
- WLAN according to IEEE 802.11a/b/g/n (2.4 GHz/5 GHz) incl. BT-compatible close range network
- WLAN Security¹: WEP, WPA, IEEE802.11i (WPA2), WPA2-PSK, Personal and Enterprise, 802.11x: PEAP-MSCHAPv2, EAP-TLS

* Registered trademark - NXP
 ** Registered trademark - Android™ - Android is a trademark of Google LLC
¹ Standard codification validated by ACD.
 Subject to technical modifications.

OPTIONS & ACCESSORIES



DS260 standard version



Replacement Battery



RAM Mount mounting device for Mobile Handheld Computers



M260xx zipper and loop



M260xx zipper



M260xx Mount



M260xx Mount Set RAM Mount



M260xx holster bag

Our sales department will also be happy to help you with the selection under the telephone number +1 773-558-4663

02 / BACKHAND SCANNER



Ergonomic backhand scanner for logistics

Consistently developed on the basis of requirements from logistics and industry, the Hasci backhand scanner offers - as one of the smallest and lightest - the optimal solution for small parts picking, where work is usually „hands-free“. The Hasci can also be used on large production lines in industry and, due to the wide range of operating temperatures, production companies in the food sector can also use the Hasci without hesitation.



01 / Backhand Scanner HasciSE

TECHNICAL DATA

Housing:	ABS	Keyboard:	Button to switch on and off and for scanning
Protection:	IP54	Barcode scanner:	2D scanner SE4770 integrated in housing; opportunity to scan DotCodes as option
Operating temperature:	-20 °C to 50 °C/-4 °F to 122 °F	Interfaces:	BT-compatible close-range network 4.0 USB OTG
Charging temperature:	10 °C to 40 °C/50 °F to 104 °F		
Storage temperature:	-20 °C to 20 °C/-4 °F to 68 °F		
Dimensions:	56 x 45 x 14 mm (L x W x H)		
Weight:	45 g		
Power supply:	Battery, li-po with 1.66 Wh (450 mAh/3.7 V), docking station		
Display:	Status LED		

TECHNICAL DATA



Special features:

- Scan trigger via configurable infrared proximity sensor and scanner key
- Scan feedback via vibration, sound and visually
- Pairing via BT-compatible close-range network
- Easy pairing via ACD EasyToConnect 2.0

Compatibility with all BT-enabled devices:

- BT 4.0 and above

Compatibility with ACD devices:

- Vehicle Mount Terminal MFT1x series

Subject to technical modifications.

OPTIONS & ACCESSORIES



DSHasciSE charging box



HasciSE Zipper-Set round



HasciSE Zipper-Set square



ACD hand strap right incl. finger switch (size S)



ACD hand strap right incl. finger switch (size M/L)



ACD hand cuff right incl. finger switch (size 7)



ACD hand cuff right incl. finger switch (size 8)



ACD hand cuff right incl. finger switch (size 9)



ACD hand cuff right incl. finger switch (size 10)



ACD hand cuff left incl. finger switch (size 7)



ACD hand cuff left incl. finger switch (size 8)



ACD hand cuff left incl. finger switch (size 9)



ACD hand cuff left incl. finger switch (size 10)

Our sales department will also be happy to help you with the selection under the telephone number +1 773-558-4663

03 / VEHICLE MOUNT TERMINALS



Robust all-rounders on order picking vehicles

To optimize demanding logistics applications, the vehicle mount and forklift terminals of the MFT series with large colour display (three different display sizes), touch screen (capacitive or resistive) and individually configurable function keys offer more space for displaying complex applications and excellent readability, even in sunlight. The sturdy aluminum housing offers sufficient impact resistance, dust protection, water protection and increased durability even in harsh industrial environments down to -30 °C/-22 °F.



03 / Vehicle Mount Terminals

MFT10

TECHNICAL DATA

Housing:	Aluminium, powder-coated
Resilience:	Shock and Vibration according to EN 60068-2 Part -6, -27
Protection:	IP65
Operating temp.:	-30 °C to 45 °C/-22 °F to 113 °F
Storage temp.:	-30 °C to 70 °C/-22 °F to 158 °F
Rel. humidity:	5 % to 95 % (in operation), non-condensing
Dimensions:	270 x 235 x 62 mm/10.63 x 9.25 x 2.44 inch (W x H x D; without accessories)
Weight:	Approx. 2.8 kg/6.17 lb (without accessories)
Power supply:	8.5 to 72 V DC (electrically isolated)
Power consumption:	Approx. 19 W (as standard), max. 60 W (freezer use)

Display:	10.4" color TFT display XGA with LED backlight, 1024 x 768 pixels, 350 cd/m², 2 status LEDs
Touchscreen:	Resistive, minimum surface hardness of 3H, with robust, chemically hardened beaming glass
Keyboard:	Virtual on-screen keyboard, 5 freely programmable function keys
Graphics:	Integrated graphics unit, DirectX11 support
Processor:	Intel Celeron* Quad Core 4x 1.83 GHz (N2930, Bay Trail-M)
Memory:	64 GB flash, 4 GB RAM (DDR3L), 8 GB RAM (DDR3L) optional, 128 GB flash optional
Operating system:	Android™** Industrial+
BIOS:	UEFI BIOS, update-capable, bootable from LAN or USB as standard
Interfaces:	Ethernet 100-BaseT/10-BaseT autoswitch, RS232, 4x USB 2.0, integrated speaker in speech output quality, audio/microphone input via jack plugs

TECHNICAL DATA



Special features:

- Integrated energy buffer for short-term bridging of power breakdowns
- 2 integrated antennae
- Fan-less design
- Device start-up and shutdown via freely definable function keys (ATX function) and via ignition
- Sunlight readable

Options:

- WLAN IEEE 802.11a/b/g/n/ac (2.4 GHz/5 GHz) incl. BT-compatible close-range network
WLAN Security¹: WPA, IEEE802.11i (Personal and Enterprise), WPA2, WPA2-PSK
802.1x: PEAP-MSCHAPv2, PEAP-GTC, PEAP-TLS, EAP-TLS, EAP-TTLS, EAP-FAST, LEAP
- Integrated battery for up to 1.5 hours of operation

*

Registered trademark - Intel Celeron

**

Registered trademark - Android™ - Android is a trademark of Google LLC

1

Standard codification validated by ACD.

Subject to technical modifications.



03 / Vehicle Mount Terminals

MFT12

TECHNICAL DATA

Housing:	Aluminium, powder-coated
Resilience:	Shock and Vibration according to EN60068-2 Part -6, -27
Protection:	IP65
Operating temp.:	-30 °C to 45 °C/-22 °F to 113 °F
Storage temp.:	-30 °C to 70 °C/-22 °F to 158 °F
Rel. humidity:	5 % to 95 % (in operation), non-condensing
Dimensions:	308 x 268 x 63 mm/12.13 x 10.55 x 2.48 inch (W x H x D; without accessories)
Weight:	Approx. 3.6 kg/7.94 lb (without accessories)
Power supply:	9 to 72 V DC (electrically isolated)
Power consumption:	Approx. 19 W (as standard), max. 60 W (freezer use)

Display:	12.1" color TFT display XGA with LED backlight, 1024 x 768 pixels, 500 cd/m², 2 status LEDs
Touchscreen:	Resistive, minimum surface hardness of 3H, with robust, chemically hardened beaming glass
Keyboard:	Virtual on-screen keyboard, 5 freely programmable function keys
Graphics:	Integrated graphics unit, DirectX11 support
Processor:	Intel Celeron* Quad Core 4x 1.83 GHz (N2930, Bay Trail-M)
Memory:	64 GB flash, 4 GB RAM (DDR3L), 8 GB RAM (DDR3L) optional, 128 GB flash optional
Operating system:	Android™** Industrial+
BIOS:	UEFI BIOS, update-capable, bootable from LAN or USB as standard
Interfaces:	Ethernet 100-BaseT/10-BaseT autoswitch, RS232, 4x USB 2.0, integrated speaker in speech output quality, audio/microphone input via jack plugs

TECHNICAL DATA



Special features:

- Integrated energy buffer for short-term bridging of power breakdowns
- 2 integrated antennae
- Fan-less design
- Device start-up and shutdown via freely definable function keys (ATX function) and via ignition
- Sunlight readable

Options:

- WLAN IEEE 802.11a/b/g/n/ac (2.4 GHz/5 GHz) incl. BT-compatible close-range network WLAN Security¹: WPA, IEEE802.11i (Personal and Enterprise), WPA2, WPA2-PSK
802.1x: PEAP-MSCHAPv2, PEAP-GTC, PEAP-TLS, EAP-TLS, EAP-TTLS, EAP-FAST, LEAP
- Integrated battery for up to 1.5 hours of operation

* Registered trademark - Intel Celeron
 ** Registered trademark - Android™ - Android is a trademark of Google LLC
 1 Standard codification validated by ACD.
 Subject to technical modifications.

OPTIONS & ACCESSORIES



Power pack MFT1x



Voltage Supply Cable (3 wired)



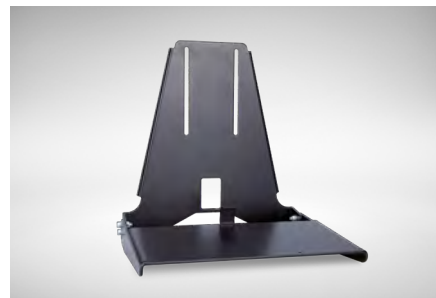
MFT10/MFT12 Mounting kit flat Standard



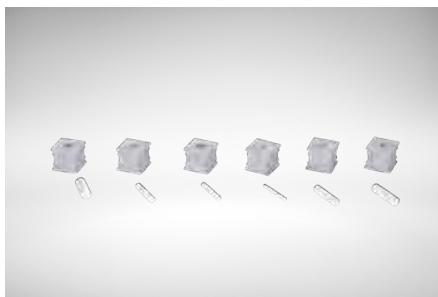
MFT10 Mounting kit RAM Mount



MFT12 Mounting kit RAM Mount



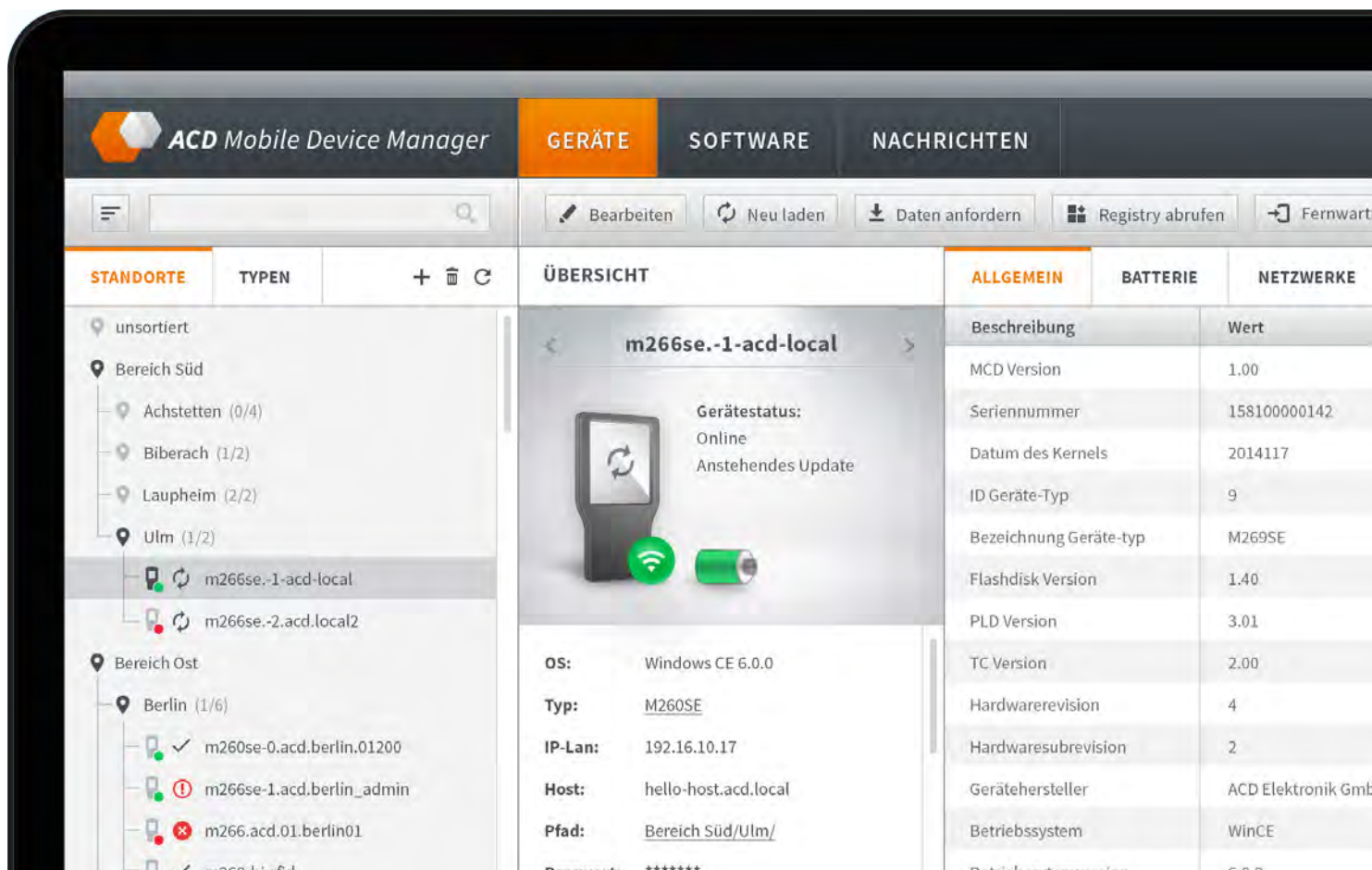
MFT1x Keyboard Mounting Device – without keyboard



Spout Set for interface cable

Our sales department will also be happy to help you with the selection under the telephone number +1 773-558-4663

04 / SOFTWARETOOLS



Our software tools for the management of Mobile Handheld Computers

Supporting software applications for the operating systems Android™ Industrial+ and supporting ACD Android™ Industrial+ Apps.



04.1 / Softwaretools

Mobile Handheld Computers

OVERVIEW

- FTP-Server KosmosFTP
- ACD ScanConfig
- Remote access via SCRCPY
- ACD SystemApp
- Android™** Browser
- ACD KioskBrowser
- ACD KioskMode
- ACD EasyToConfig

	M260TE
FTP-Server KosmosFTP KosmosFTP (communication server for portable systems) is a standard ACD product for Windows®** PCs (PC application) with which Mobile Handheld Computers (FTP client) can connect and exchange data via FTP. The application receives and distributes data via FTP and RAPI (just in combination with Windows®** CE). The special feature here is that the inbound files can be processed further via pluggable batches or plugins. Authentication, uploads and downloads can be controlled as desired via plugins.	optional
ACD ScanConfig ACD ScanConfig can be used to configure the integrated scanner of the Mobile Handheld Computer: <ul style="list-style-type: none"> • Activate/deactivate barcode types • Expand barcode with prefix/suffix • Various other settings The scan data is integrated into the keyboard. When a program wants to use the scanner API, this hooks up to the ACD ScanService.	×
Remote access via SCRCPY (via ADB) Remote access via SCRCPY provides remote control. The SCRCPY server runs on the Mobile Handheld Computers. The Mobile Handheld Computer can be controlled remotely from the PC using the installed SCRCPY.	×
ACD SystemApp ACD SystemApp is a program to display system information.	×
Android™** Browser Android™** standard browser to illustrate websites.	×
ACD KioskBrowser The ACD KioskBrowser is a simple, restrictive web browser that limits user access. In this case, for example, access is limited to the address bar.	×
ACD KioskMode With ACD KioskMode end users will only have access to specific applications.	×
ACD EasyToConfig With ACD EasyToConfig, setting up and configuring mobile devices is easy. Significant features of this product include fast initial setup (WLAN, system settings, etc.) as well as easy transfer of the initial setup to other devices (by file or barcode)	optional

*

Registered trademark - Microsoft

**

Registered trademark - Android™ - Android is a trademark of Google LLC
Subject to technical modifications.



04.2 / Softwaretools

Backhand Scanner

OVERVIEW

- ACD EasyToConnect 2.0

	HasciSE
ACD EasyToConnect 2.0 With the ACD EasyToConnect 2.0 a simple pairing between HasciSE and counterpart device is possible	optional

Subject to technical modifications.



04.3 / Softwaretools

Vehicle Mount Terminals

OVERVIEW

- ACD TerminalSettings
- Android™* Browser
- ACD KioskBrowser
- ACD KioskMode

ACD Softwaretools I Vehicle Mount Terminals

	MFT10	MFT12
ACD TerminalSettings ACD TerminalSettings is a diagnosis/configuration program for battery monitoring and system parameters.	×	×
Android™* Browser Android™* standard Browser to illustrate websites.	×	×
ACD KioskBrowser The ACD KioskBrowser is a simple, restrictive web browser that limits user access. In this case, for example, access is limited to the address bar.	×	×
ACD KioskMode With ACD KioskMode end users will only have access to specific applications	×	×

* Registered trademark - Android™ - Android is a trademark of Google LLC
Subject to technical modifications.

05 / MOBILE WORKSTATION MAX



Saves travel time and makes IT equipment mobile

The mobile workstations are particularly suitable for flexible data acquisition and independent work in the entire warehouse environment. The extremely robust design and the flexible modular system ensure a needs-based and process-optimised workstation, independent of the power supply network for: Entire warehouse environment - Goods receipt/issue - Quality assurance - Inventory



05 / Mobile Workstation MAX Li-Ion US

TECHNICAL DATA

Basic structure:

- Aluminium base frame with four castors (two with locking brakes)
- Adjustable work height, standard 1,130 mm/44.49 inch (DIN 4549)
- Easy to push thanks to ergonomic handle and large castors
- Very stable due to corner castors and low centre of gravity
- Dimensions: 1,130 x 550 x 580 mm/ 44.49 x 21.65 x 22.83 inch (H x W x D)
- Weight: 64 - 81 kg/141.10 - 178.57 lb (depending on version, without accessories)
- Temperature range: 4 °C to 40 °C/39 °F to 104 °F

Equipment:

- Desk: 500 x 440 mm/19.69 x 17.32 inch (W x D), desk height adjustable
- Standard rear wall with document pocket
- OnBoard charger 25 A
- 1 x Lithium-iron phosphate battery 25.6 V/50 Ah (maintenance-free) (MAX STD 300 Li-Ion US)

2 x Lithium-iron phosphate battery 12.8 V/100 Ah (maintenance-free) (MAX STD 750 Li-Ion US/ MAX STD 1200 Li-Ion US)

- Integrated battery management system to balance and supervise battery cells
- Residual current circuit breaker (RCD)
- 24 V DC connector including plug
- 6-way power outlet NEMA-5 with switch (USA)
- Bluetooth Module Li-Ion

Equipment variants:

- MAX STD 300 Li-Ion US: OnBoard sinus power inverter 120 V AC/300/400 VA
- MAX STD 750 Li-Ion US: OnBoard sinus power inverter 120 V AC/700 VA
- MAX STD 1200 Li-Ion US: OnBoard sinus power inverter 120 V AC/1200 VA

TECHNICAL DATA

**Options:**

- ACD Vehicle Mount Terminal from the MFT series

Subject to technical modifications.



05 / Mobile Workstation MAX STD US

TECHNICAL DATA

Basic structure:

- Aluminium base frame with four castors (two with locking brakes)
- Adjustable work height, standard 1,130 mm/44.49 inch (DIN 4549)
- Easy to push thanks to ergonomic handle and large castors
- Very stable due to corner castors and low centre of gravity
- Dimensions: 1,130 x 550 x 580 mm/ 44.49 x 21.65 x 22.83 inch (H x W x D)
- Weight: Approx. 100 - 110 kg/ 220.46 - 242.51 lb (depending on version)
- Temperature range: 4 °C to 40 °C/39 °F to 104 °F

Equipment:

- Desk: 500 x 440 mm/19.69 x 17.32 inch (W x D), desk height adjustable
- Standard rear wall with document pocket
- OnBoard charger 10 A
- 2x AGM batteries 12 V/65 Ah (maintenance-free)
- 24 V DC connector including plug

- Battery charge indicator displays battery capacity including acoustic and optical warning signal on reaching final discharge voltage with automatic stop (incl. deep discharge protection)
- Residual current circuit breaker (RCD) (not with MAX STD OWR US)
- 6-way power outlet NEMA-5 with switch (USA) (not with MAX STD OWR US)

Equipment variants:

- MAX STD 300 US: OnBoard sinus power inverter 120 V AC/300 VA
- MAX STD 750 US: OnBoard sinus power inverter 120 V AC/700 VA
- MAX STD 1200 US: OnBoard sinus power inverter 120 V AC/1200 VA
- MAX STD OWR US: Without sinus power inverter

TECHNICAL DATA

**Options:**

- ACD Vehicle Mount Terminal from the MFT series

Subject to technical modifications.



05 / Mobile Workstation MAX BWS-R US

TECHNICAL DATA

Basic structure:

- Aluminium base frame with four castors (two with locking brakes)
- Adjustable work height, standard 1,130 mm/44.49 inch (DIN 4549)
- Easy to push thanks to ergonomic handle and large castors
- Very stable due to corner castors and low centre of gravity
- Dimensions: 1,130 x 550 x 580 mm/ 44.49 x 21.65 x 22.83 inch (H x W x D)
- Weight: Approx. 100 - 110 kg/ 220.46 - 242.51 lb (depending on version)
- Temperature range: 4 °C to 40 °C/32 °F to 104 °F

Equipment:

- Desk: 500 x 440 mm/19.69 x 17.32 inch (W x D), desk height adjustable
- Standard rear wall with document pocket
- Roll battery changing station for MAX powerstation
- OnBoard charger 10 A
- 2x AGM batteries 12 V/60 Ah (maintenance-free)

- 24 V DC connector including plug
- Battery charge indicator displays battery capacity including acoustic and optical warning signal on reaching final discharge voltage with automatic stop (incl. deep discharge protection)
- Residual current circuit breaker (RCD)
- 6-way power outlet NEMA-5 with switch (USA)

Equipment variants:

- MAX BWS-R 300 US: OnBoard sinus power inverter 120 V AC/300 VA

TECHNICAL DATA

**MAX powerstation:**

- Battery changing station for two battery trays
- Twin delivery unit with roll system for changing the batteries
- External battery charger (120 V) with 1.8 m cable length (as option)
- Necessary for MAX with roll battery change system (MAX BWS-R US)

Options:

- ACD Vehicle Mount Terminal from the MFT series

Subject to technical modifications.



05 / Mobile Workstation MAX TK US

TECHNICAL DATA

Basic structure:

- Aluminium base frame with four castors (two with locking brakes)
- Adjustable work height, standard 1,130 mm/44.49 inch (DIN 4549)
- Easy to push thanks to ergonomic handle and large castors
- Very stable due to corner castors and low centre of gravity
- Dimensions: 1,130 x 550 x 580 mm/ 44.49 x 21.65 x 22.83 inch (H x W x D)
- Weight: Approx. 110 kg/242.5 lb (depending on version)
- Temperature range: -28 °C to 40 °C/-18.4 °F to 104 °F

Equipment:

- Desk: 500 x 440 mm/19.69 x 17.32 inch (W x D), desk height adjustable
- Standard rear wall with document pocket
- OnBoard charger 10 A in freezer use layout
- 2x AGM batteries 12 V/60 Ah (maintenance-free) with battery isolation
- 24 V DC connector including plug

Equipment variants:

- Battery charge indicator displays battery capacity including acoustic and optical warning signal on reaching final discharge voltage with automatic stop (incl. deep discharge protection)
- MAX TK OWR US: Without sinus power inverter

TECHNICAL DATA

**Options:**

- ACD Vehicle Mount Terminal from the MFT series

Subject to technical modifications.



MAX STD

Total storage area:
6.600 cm²



MAX PLUS

Total storage area:
9.219 cm²

VS.

05 / Mobile Workstation MAX PLUS - 40 % more space

TECHNICAL DATA

Basic structure:

- Aluminium base frame with four castors (two with locking brakes)
- Adjustable work height; standard 1,130 mm (DIN 4549)
- Easy to push thanks to ergonomic handle and large castors
- Very stable due to corner castors and low centre of gravity
- Dimensions: 1,130 x 630 x 630 mm (H x W x D)
- Weight: Depending on variant
- Temperature range: 0 °C to 40 °C/ 32 °F to 104 °F

Equipment:

- Desk: 567 x 542 mm (W x D), desk height adjustable
- Multifunctional rear wall with document pocket
- OnBoard charger: Depending on variant

Equipment variants:

- Battery charge indicator displays battery capacity including acoustic and optical warning signal on reaching final discharge voltage with automatic stop (incl. deep discharge protection)
- 6-way power outlet Schuko (German) with residual current circuit breaker (RCD)

Storage area:

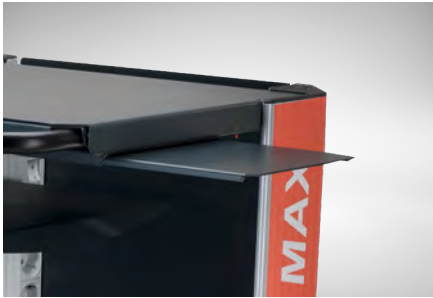
- According to customer's requirements, for appropriate quantities
- 40% more storage space than MAX STD for technical equipment

ON REQUEST

If you are interested, please feel free to contact us.

OPTIONS & ACCESSORIES

**MAX Li-Ion US / MAX STD US /
MAX BWS-R US / MAX TK US**



Keyboard/mouse pullout B500



Rear panel standard



Rear panel multifunction

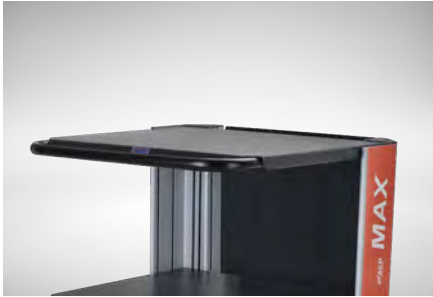


Table Plate B500 top – with handle



Table Plate B700 – T600 top – with handle, extra large/VARIABLE



Table Plate B500 Center – with pullout/VARIABLE

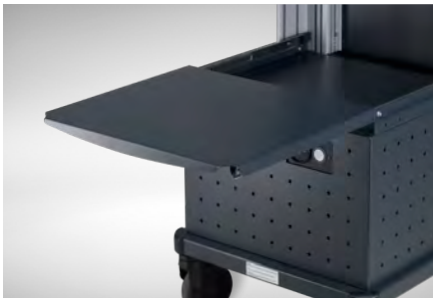


Table Plate B500 Center – with full pullout/FIX



Printer Tray B500
Front work surface enlargement



Printer Mounting Bracket Rear



Drawer B500-165 – without lock



Drawer B500-165 – with lock



Drawer B500-80 – without lock



Pen holder



Coffee cup holder



Scanner holder

OPTIONS & ACCESSORIES

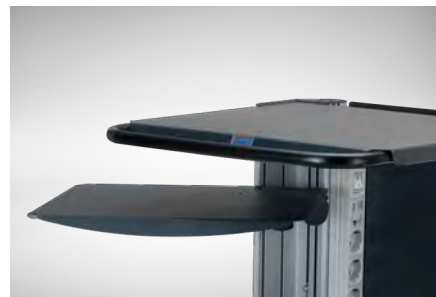
**MAX Li-Ion US / MAX STD US /
MAX BWS-R US / MAX TK US**



Side Storage Box



Label Roller Holder



Swivel Plate B420



Anti-Slip Mat for Table Plate B500



Anti-Slip Mat for Swivel Plate B420



Anti-Slip Mat for Table Plate B700



Monitor Holder VESA 75/100



Monitor Holder VESA 75/100 (Column)



Dual monitor holder vertical VESA 75/100 (Pillar)



„Dual monitor holder horizontal VESA 75/100 (Pillar)“



Monitor Holder RAM Mount VESA 75/ Arm Length 231 mm



Monitor Holder RAM Mount VESA 75/100/ Arm Length 330 mm



Thin-Client PC Mounting Bracket



Garbage Can 10 Liter Magnetic



Cable holder

OPTIONS & ACCESSORIES

**MAX Li-Ion US / MAX STD US /
MAX BWS-R US / MAX TK US**



Tires (Air-foamed)



Bluetooth Module Li-Ion



Connecting cable - VE.Direct to USB Interface



BWS-R battery change tray



Charger, external

Configure your equipment directly in the online configurator at:

<https://www.acd-group.com/max-configurator/>

Our sales department will also be happy to help you with the selection under the telephone number +1 773-558-4663

06 / PICK BY VOICE



Voice-controlled picking

With the Voxter® Elite+ pick by voice solution and the appropriate voice software, paperless picking is consistently implemented. Increase efficiency and quality picking by standardizing picking processes. In online operation, you have access to the current stock levels at any time and time-consuming stocktaking is no longer necessary.



06 / Pick by Voice Voxter® Elite+

TECHNICAL DATA

Housing:	ABS	Processor:	NXP® i.MX6 DualLite, 1 GHz (DualCore, Cortex A9)
Protection:	IP67	Memory:	8 GB eMMC, 4 GB flash (microSD), 1 GB RAM (Windows®** Embedded Compact (EC7)) 8 GB eMMC, 1 GB RAM (Android™*** Industrial+)
Operating temperature:	-10 °C to 50 °C/14 °F to 122 °F	Operating system:	Windows®** Embedded Compact 7 (EC7) Android™*** Industrial+
Storage temperature:	-20 °C to 50 °C/-4 °F to 122 °F		
Dimensions:	112 x 68 x 51 mm/4.41 x 2.68 x 2.01 inch (widest point) (L x W x H)		
Weight:	Approx. 285 g/10.05 oz		
Power supply:	Quick-change rechargeable battery, li-ion with 18.9 Wh (5,200 mAh/3.7 V) or 24.5 Wh (6,800 mAh/3.6 V), docking station or battery charger		
Display:	3 twin-colour LEDs for status display		
Keyboard:	ON/OFF button		

TECHNICAL DATA



Interfaces (Windows® Embedded Compact 7 (EC7)):**

- WLAN according to IEEE 802.11a/b/g/n (2.4 GHz/5 GHz); CCXv4
WLAN Security¹: WEP, WPA, IEEE802.11i (WPA2), WPA2-PSK, Personal and Enterprise, 802.11x: PEAP-MSCHAPv2, PEAP-TLS, PEAP-GTC, EAP-FAST, EAP-TLS, EAP-TTLS, LEAP
- BT-compatible close-range network
- Robust headset connector
- Internal memory card

Interfaces (Android™* Industrial+):**

- WLAN according to IEEE 802.11a/b/g/n (2.4 GHz/5 GHz),
WLAN Security¹: WEP, WPA, IEEE802.11 i (WPA2), WPA2-PSK, Personal and Enterprise, 802.11x: PEAP-MSCHAPv2, EAP-TLS
- BT-compatible close-range network
- Robust headset connector

* Registered trademark - NXP
 ** Registered trademark - Microsoft
 *** Registered trademark - Android™ - Android is a trademark of Google LLC
¹ Standard codification validated by ACD.
 Subject to technical modifications.

OPTIONS & ACCESSORIES



DSVoxter Elite+



Voxter® Elite+ multi charger for 2-fold



Voxter® Elite+ multi charger for 8-fold



Voxter® Elite+ Replacement Battery



VoiceWear



Headset

Our sales department will also be happy to help you with the selection under the telephone number +1 773-558-4663

WE ARE LOOKING FORWARD TO YOUR INQUIRY!

We also offer all products for testing in advance.
Simply make an appointment with our sales department.

**ACD USA Inc
1001 Mittel Drive
Wood Dale, IL 60191
USA**

**Tel.: +1 773-558-4663
Christopher.Gould@acd-group.com**